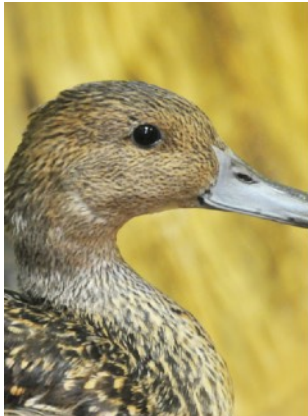




EDUCATION PROGRAM BOOKING INFORMATION for Adult Groups

Our Location:

We are located between Spruce View and Caroline, just off Highway 54. We are about a 45 minute drive from Red Deer, 30 minutes from Innisfail, 35 minutes from Sylvan Lake, and 40 minutes from Olds. By bus, this would likely take a bit longer. Find us on Google Maps here: <https://goo.gl/maps/aG95sTYqd3gPKPDq7>



What You Need to Bring:

Our program takes place in a beautiful, covered shelter with bench seating. Although protected from the elements, it is without heating or cooling. Located mid-point on our nature trail, audience members need to be prepared to walk about 10 minutes each way on natural terrain and be prepared for the weather. We suggest bringing items such as good walking shoes, jacket, hat, and depending on the forecast, raincoats and rubber boots. **Please bring sunscreen and bug repellent.**



Timing:

An onsite experience lasts about 2 hours. This includes a 1 hour formal presentation, 20 minutes of walking, and extra time to explore the nature trail and peruse the gift shop. More time can be taken on your own for birdwatching and picnicking if interested.

Our onsite programming becomes available May 19, 2020. Moving forward, onsite bookings will be available May 1 through September 30 each year.

Donations:

The Medicine River Wildlife Centre is **NOT** a government organization. We are a registered charity and our hospital and education programs are supported by donations, for which we can provide tax receipts. We feel that educating the public about wildlife rehabilitation and respect for nature is critical for the future of our planet. Unfortunately, we cannot afford to do it for free.

We **suggest a donation** of at least \$200 for each presentation. We understand that many schools have financial restrictions and may not be able to afford this amount. **It is only a suggested amount and we sincerely appreciate whatever donation we receive.**

Please do not hesitate to call or email if you have any questions or concerns.



Education Coordinator: Erin Young
erin.young@mrwc.ca