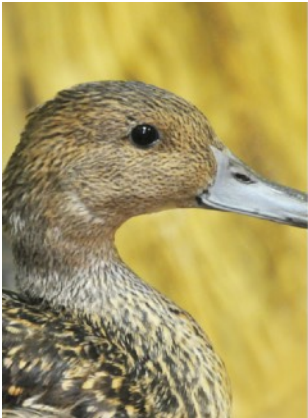




EDUCATION PROGRAM BOOKING INFORMATION for Other Children's Groups

Our Location:

We are located between Spruce View and Caroline, just off Highway 54. We are about a 45 minute drive from Red Deer, 30 minutes from Innisfail, 35 minutes from Sylvan Lake, and 40 minutes from Olds. By bus, this would likely take a bit longer. Find us on Google Maps here: <https://goo.gl/maps/aG95sTYqd3gPKPDq7>

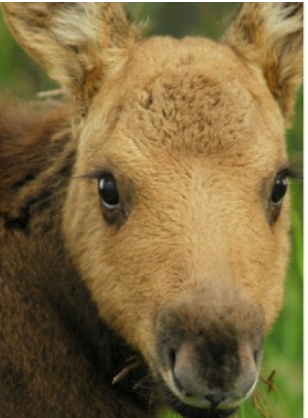


What You Need to Bring:

Our programs run, rain or shine. We will be spending a great deal of our time outdoors so being prepared for the weather is important. We suggest bringing items such as good walking shoes (no flip-flops), jacket, hat, and depending on the forecast, raincoats and rubber boots. **Please bring sunscreen and bug repellent.**

Timing:

Depending on the age of the children and programs requested, an onsite experience lasts from 2 to 3 1/2 hours. A breakdown of the experience with details on timing is listed in the Onsite Education Program Synopses.



Our onsite programming becomes available May 19, 2020. Moving forward, onsite bookings will be available May 1 through September 30 each year.

Donations:

The Medicine River Wildlife Centre is **NOT** a government organization. We are a registered charity and our hospital and education programs are supported by donations, for which we can provide tax receipts. We feel that educating the public about wildlife rehabilitation and respect for nature is critical for the future of our planet. Unfortunately, we cannot afford to do it for free.



We **suggest a donation** of at least \$200 for each presentation. We understand that many schools have financial restrictions and may not be able to afford this amount. **It is only a suggested amount and we sincerely appreciate whatever donation we receive.**

We also encourage leaders to send our Otis the Owl book flyers and Wish List home with children as many families are interested in individual purchases or donations. If book orders are placed prior to your visit, we can provide the books to the students while onsite.

Education Coordinator: Erin Young - erin.young@mrwc.ca