

## **COMPLETE ONSITE EDUCATION PROGRAM SYNOPSIS**

### **Adult Groups**

The onsite experience begins with a welcome and basic, limited tour of our facility. Please be aware that much of the hospital and caging is off limits in order for the wild patients to recover in peace. There will also be an opportunity for a bathroom break and a glance in the gift shop.

Let's get started! We will head out on our short trail walk, leading to the Learning Lodge. This will last about 10 minutes and is on natural terrain. Once we reach the Learning Lodge we will head inside for the sit-down portion of the visit. We will be protected from the elements but there is no heating or cooling. Seating is bench style.

The presentation introduces the concept of wildlife rehabilitation. Along with pictures, we discuss an animal's journey through the wildlife hospital, including treatment, caging, food, exercise, and eventual release. We also go through the types of species we may see through our centre. Next, we show examples of common wildlife injuries and how humans impact our environment, offering suggestions as to how each person can make a difference and prevent such injuries. The main focus of our presentation is a promotion of general respect for our environment and the creatures living in it. We touch on some social issues such as rumours and misinformation and how they compare with our attitudes toward wildlife. Finally, we bring out a live education animal. We teach about the specifics of that species and welcome questions from the audience. This lasts about 60 minutes.

Time to get up and move! You will continue with the rest of the visit on your own. Enjoy the views from the tower overlooking the wetland. Walk the trail at your own speed, either taking the same path back or completing the route. Close to 140 species of birds have been spotted on our property, along with many kinds of mammals, insects, reptiles and amphibians, plants, flowers, and mushrooms. This will take at least another 20 minutes, but we encourage longer.

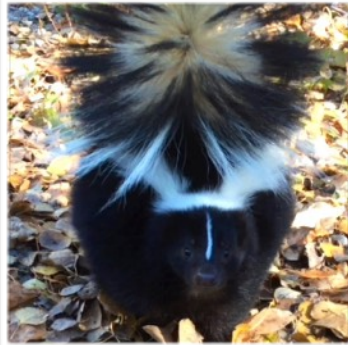
Finish off your visit with a visit to the gift shop, lunch in the picnic area, and even some fun in our Wildlife Homes Playground!

**The entire experience will last at least 2 hours.**

**Education Animals:** You may ask for a particular animal but please be aware that we may not be able to fulfill that request. If the animal is booked elsewhere, does not work with the handler, or simply needs a break, we will bring a different animal. We will reserve an animal when you book your program but it may be changed prior to the date.



**Otis the Great Horned Owl** has been a part of the education team since 2003. He has no physical injuries but is human-imprinted and cannot be released into the wild. He loves to hoot and flap for his audiences.



**Fang the Striped Skunk** was admitted into our hospital in 2017. He was a runt and had infections in both eyes. After he regained his sight it was decided that he would help us to educate the public about his often misunderstood species.



**Olive the Great Horned Owl** joined the education team in 2019 as a youngster. She is socialized and comfortable with people and cannot be released. Being a female, she is bigger than Otis and has a spicy personality.